

FORTIJUCE

A ready-to-drink, fat free, reduced mineral content juice-style oral nutritional supplement.

FEATURES

- **300kcal/bottle (1.5kcal/ml):** energy dense to improve body weight.¹
- **Fibre free:** for patients requiring residue-restricted diets.
- **Fat free:** for patients requiring fat-restricted diets.
- **Fruit tasting ONS[^]:** for patients who dislike milky tasting supplements.
- **Reduced mineral content (sodium, potassium, calcium, phosphorus and magnesium):** for patients that require select mineral restriction.
- **User-friendly bottle:** ergonomic plastic bottle, with resealable easy to open cap.

Indications

For use in the dietary management of:

- Disease related malnutrition.
- Patients with high energy requirements.
- Patients requiring a residue restricted diet.
- Patients requiring fat restriction.
- Patients requiring a select mineral restriction e.g. renal replacement therapy.

Important Notice

- Not suitable as a sole source of nutrition.
- Not for parenteral use.
- Not suitable for patients with galactosaemia.
- Not suitable for patients with cow's milk protein allergy.
- Not suitable for infants and children under 3 years of age.
- Use with caution in children aged 3-6 years of age.

Directions for Use

- Shake well before use.
- Best served chilled.
- Usage to be determined by a healthcare professional.

Storage

- Store in a cool, dry place.
- Once opened, store in the refrigerator.
- Discard unused contents after 24 hours.

Ordering Information

To order contact Nutricia Customer Care **0800 688 747**.

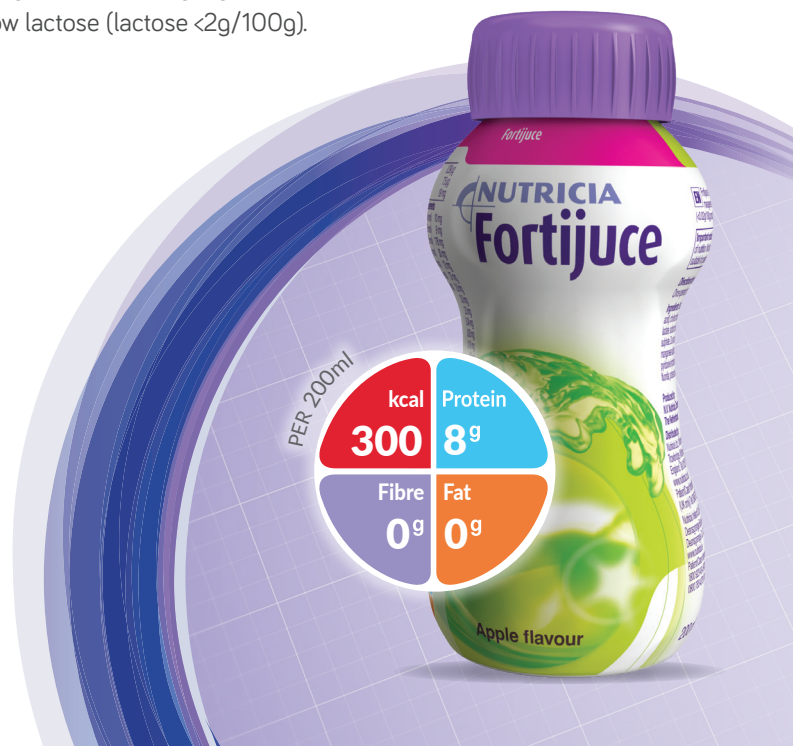
Fortijuce	Presentation	Product code	Units per carton	Pharmacode
Apple	200ml bottle	155712	24	2224518
Orange	200ml bottle	155761	24	2224534
Strawberry	200ml bottle	155623	24	2224526

Ingredients*

Fortijuce Apple: Water, glucose syrup, maltodextrin, cow's **milk** protein (whey protein isolate), sugar, flavour (apple), acidity regulator (citric acid), choline chloride, calcium chloride, L-Ascorbic acid, potassium chloride, ferrous lactate, sodium chloride, magnesium chloride, colour (curcumin), colour (caramel E150d), zinc sulphate, DL- α -tocopheryl acetate, copper gluconate, calcium D-pantothenate, nicotinamide, thiamin hydrochloride, retinyl palmitate, mangaense sulphate, sodium fluoride, pyridoxine hydrochloride, riboflavin, pteroylmonoglutamic acid, chromium chloride, potassium iodide, phytomenadione, sodium molybdate, sodium selenite, D-Biotin, cholecalciferol, cyanocobalamin.

Allergen & Cultural Information

- Contains: cow's milk protein.
- Does not contain: wheat, egg, nuts**, lupins.
- Halal certified.
- No Kosher forbidden ingredients.
- No gluten containing ingredients.
- Low lactose (lactose <2g/100g).



FORTIJUICE

NUTRITION INFORMATION*		Per 100ml	Per 200ml
Energy	kcal	150	300
	kJ	635	1270
Protein	g	3.9 (10.6% E)	7.8
Whey	g	3.9	7.8
Carbohydrate	g	33.6 (89.4% E)	67.2
Sugars	g	14.4	28.8
as Lactose	g	<0.025	<0.05
Fat	g	0 (0% E)	0
Fibre	g	0	0
Water	ml	76	152
Minerals		Per 100ml	Per 200ml
Sodium	mg	8.5	17
	mmol	0.37	0.74
Potassium	mg	9.7	19.4
	mmol	0.25	0.5
Calcium	mg	25	50
Phosphorus	mg	12	24
Magnesium	mg	1.6	3.2
Chloride	mg	178	356
Ca:P ratio		2.1:1	2.1:1
Vitamins		Per 100ml	Per 200ml
Vitamin A	µg-RE	82	164
Vitamin D	µg	1.3	2.6
Vitamin E	mg α-TE	2.3	4.6
Vitamin K	µg	10	20
Vitamin C	mg	19	38
Thiamin	mg	0.29	0.58
Riboflavin	mg	0.32	0.64
Niacin	mg NE	2.94	5.88
Vitamin B6	mg	0.33	0.66
Vitamin B12	µg	0.6	1.2
Folic Acid	µg	41.3	82.6
Pantothenic Acid	mg	1	2
Biotin	µg	6	12

Trace Elements		Per 100ml	Per 200ml
Iron	mg	2.5	5
Zinc	mg	1.8	3.6
Manganese	mg	0.15	0.3
Copper	µg	340	680
Iodine	µg	25	50
Molybdenum	µg	9.8	19.6
Selenium	µg	8.7	17.4
Chromium	µg	7.9	15.8
Fluoride	mg	0.17	0.34
Other		Per 100ml	Per 200ml
Choline	mg	69	138
Osmolality	mOsmol/ kgH ₂ O	960	960

**A food for special medical purposes;
to be used under strict medical supervision.**

For more information call the
Nutricia Clinical Care Line 0800 636 228

* Please note the ingredients list and nutritional information is for Apple flavour only. There are minor variations between different flavours. For the full ingredients list and nutritional information for the other flavours, please contact the Nutricia Clinical Care Line on 0800 636 228.

**Peanut (*Arachis hypogaea*), Almond (*Amygdalus communis L.*), Hazelnut (*Corylus avellana*), Walnut (*Juglans regia*), Cashew (*Anacardium occidentale*), Pecan nut (*Carya illinoensis (Wangenh.) K. Koch*), Brazil nut (*Bertholletia excelsa*), Pistachio nut (*Pistacia vera*), Macadamia nut and Queensland nut (*Macadamia ternifolia*) and products thereof.

^ONS – Oral nutritional supplement

REFERENCES 1. Milne AC, et al. Protein and energy supplementation in elderly people at risk from malnutrition. Cochrane Database Syst Rev. 2009; 2.

NUTRICIA
LIFE-TRANSFORMING NUTRITION

Danone Nutricia NZ Ltd
56-58 Aintree Avenue, Airport Oaks,
Auckland 2022, New Zealand.
www.nutriciamedical.co.nz

NC4964-Feb22 / NUT1383